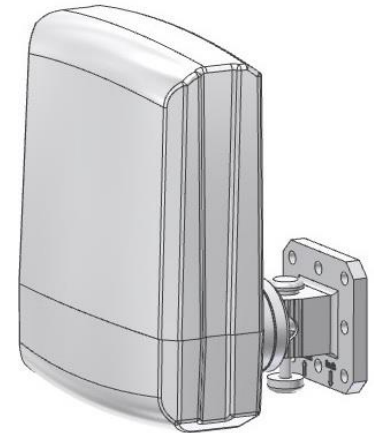


Multi-Band Patch Antenna

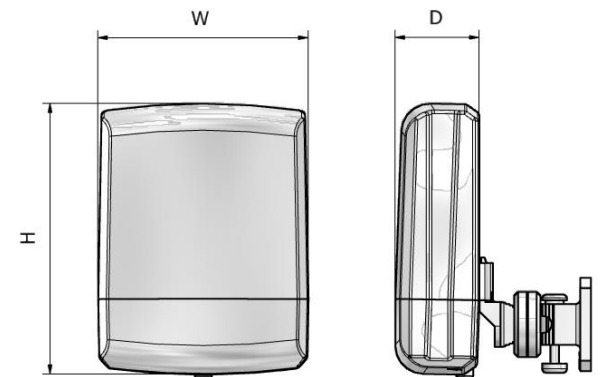
819~960, 1710~2690, 3350~3900 MHz / 4dBi, 6dBi, 7dBi

Patch_5dBi_3.5Ghz

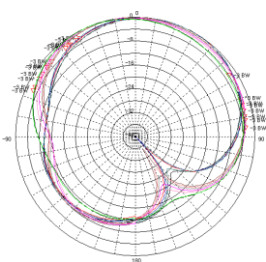
i. Electrical Specification				
Frequency Range (MHz)	819 ~ 960	1710 ~ 2690	3350~3900	
Polarization	Vertical			
Band Width	141 MHz	980 MHz	550 MHz	
Gain	≥ 4 dBi	≥ 6 dBi	≥ 7 dBi	
Beam width	Horizontal	90 ~ 150°	50 ~ 95°	40 ~ 70°
	Vertical	30 ~ 95°	40 ~ 80°	20 ~ 50°
F-B ratio (180 ± 30°)	5dB	10dB	10dB	
VSWR	1 : 1.8	1 : 1.6	1 : 1.6	
Impedance	50 Ω			
IMD (3rd)	≤ -140 dBc @ 2x37dBm			
IMD (5th)	≤ -160 dBc @ 2x37dBm			
Maximum input power	≤ 10 W			



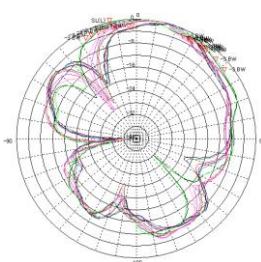
ii. Mechanical Specification	
Radom Dimension (HxWxD)	145 x 111 x 45 mm (LGU+규격:210x200x50 mm)
Weight (Exclude bracket)	≤ 0.8 kg
Connector Type	N-Female X 1
Withstand Wind Pressure	30 m/sec
Radiator Material	황동, AL, PCB(부식방지처리)
Radome Material	ABS / ASA / Anti-UV-PVC 중 택1
Radome Color	회색, 흰색, 아이보리색 중 택1
Mechanical Down Tilt	Up, Down ± 30°
	Left, Right ± 30°
Vibration	3Grms
Temperature	-40 °C ~ 70 °C



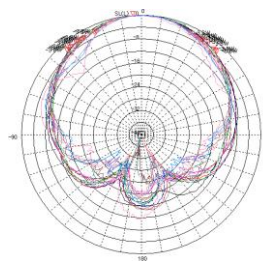
iii. Radiation Pattern



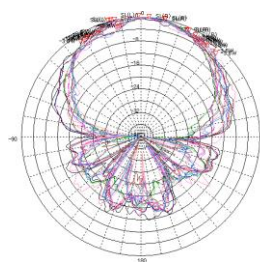
Horizontal Pattern
(819~960 MHz)



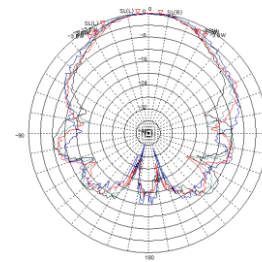
Vertical Pattern
(819~960 MHz)



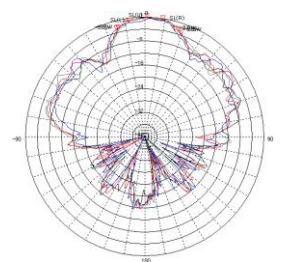
Horizontal Pattern
(1710~2690 MHz)



Vertical Pattern
(1710~2690 MHz)



Horizontal Pattern
(3400~3700 MHz)



Vertical Pattern
(3400~3700 MHz)